



2 BHK

TYPE-7 Layout
 2 Bedroom + 2 Toilet

Carpet Area 59.14 sq.m
Super Built-up Area 106.30 sq.m (1144 sq.ft)

Floor: Third & Fourth
Blocks: B, D, J, M, P, Q

Keyplan





2 BHK

TYPE-5 Layout

2 Bedroom + 2 Toilet

Carpet Area

59.14 sq.m

Super Built-up Area

106.30 sq.m(1144 sq.ft)

Floor: Fourth

Blocks: D, E, J, K, N, P, Q

Keyplan





2 BHK

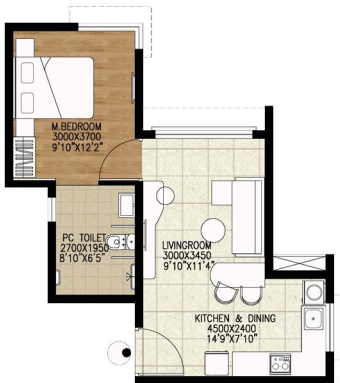
TYPE-4 Layout
 2 Bedroom + 2 Toilet

Carpet Area 59.14 sq.m
Super Built-up Area 106.30 sq.m(1144 sq.ft)

Floor: Ground, First, Second, Third & Fourth
Blocks: A, B, C, D, E, F, G, H, J, K, L, M, N, P, Q, R, S

Keyplan





1 BHK

TYPE-1 Layout

1 Bedroom + 1 Toilet

Carpet Area

38.86 sq.m

Super Built-up Area

65.45 sq.m(704 sq.ft)

Floor: Ground, First, Second, Third & Fourth

Blocks: N, Q, S, C, D, F, H, J, K

Keyplan

